

# Evaluating Patients For Primary Syphilis (P1/3)

## \*SEXUAL HISTORY, RISK ASSESSMENT & PHYSICAL EXAM

### Sexual History, Risk Assessment (past year):

- gender of partners
- number of partners (new, anonymous, serodiscordant HIV status, exchange of sex for drugs or money)
- types of sexual exposure
- recent STDs; HIV serostatus
- substance abuse
- condom use

### Physical Exam

- oral cavity
- lymph nodes
- skin
- palms & soles
- neurologic
- genitalia/pelvic
- perianal

### History of syphilis

prior syphilis (last serologic test & last treatment)

## †DIAGNOSTIC ISSUES IN PRIMARY SYPHILIS

### Darkfield

~ 80% sensitive, varies with experience/skill of examiner & decreased sensitivity as lesion ages

### RPR/VDRL

- A negative RPR/VDRL does not exclude the diagnosis of syphilis; only ~75-85% sensitive in primary syphilis
- Tests must be quantified to the highest titer & titer on the day of treatment must be used to assess treatment response
- Always use the same testing method (RPR or VDRL) in sequential testing; cannot compare titer from the two tests
- Tests lack specificity (biologic false positive); all reactive tests need to be confirmed by a treponemal test for syphilis diagnosis

## TREATMENT & FOLLOW-UP

### ‡Treatment of Primary Syphilis

Recommended Regimen

- Benzathine Penicillin G 2.4 million units IM x 1

Alternative Regimens for Penicillin Allergic Non-Pregnant Patients:  
efficacy not well established & not studied in HIV infected; close follow-up essential

- Doxycycline 100 mg po bid x 2 weeks or
- Tetracycline 500 mg po qid x 2 weeks or
- Ceftriaxone 1gm IM or IV qd x 8-10 d

Also see CDC 2006 STD Treatment Guidelines: <http://www.cdc.gov/std/treatment/>  
& CA STD Treatment Guidelines Grid:  
<http://www.stdhivtraining.org/pdf/2006TreatmentGuidelines.pdf> “

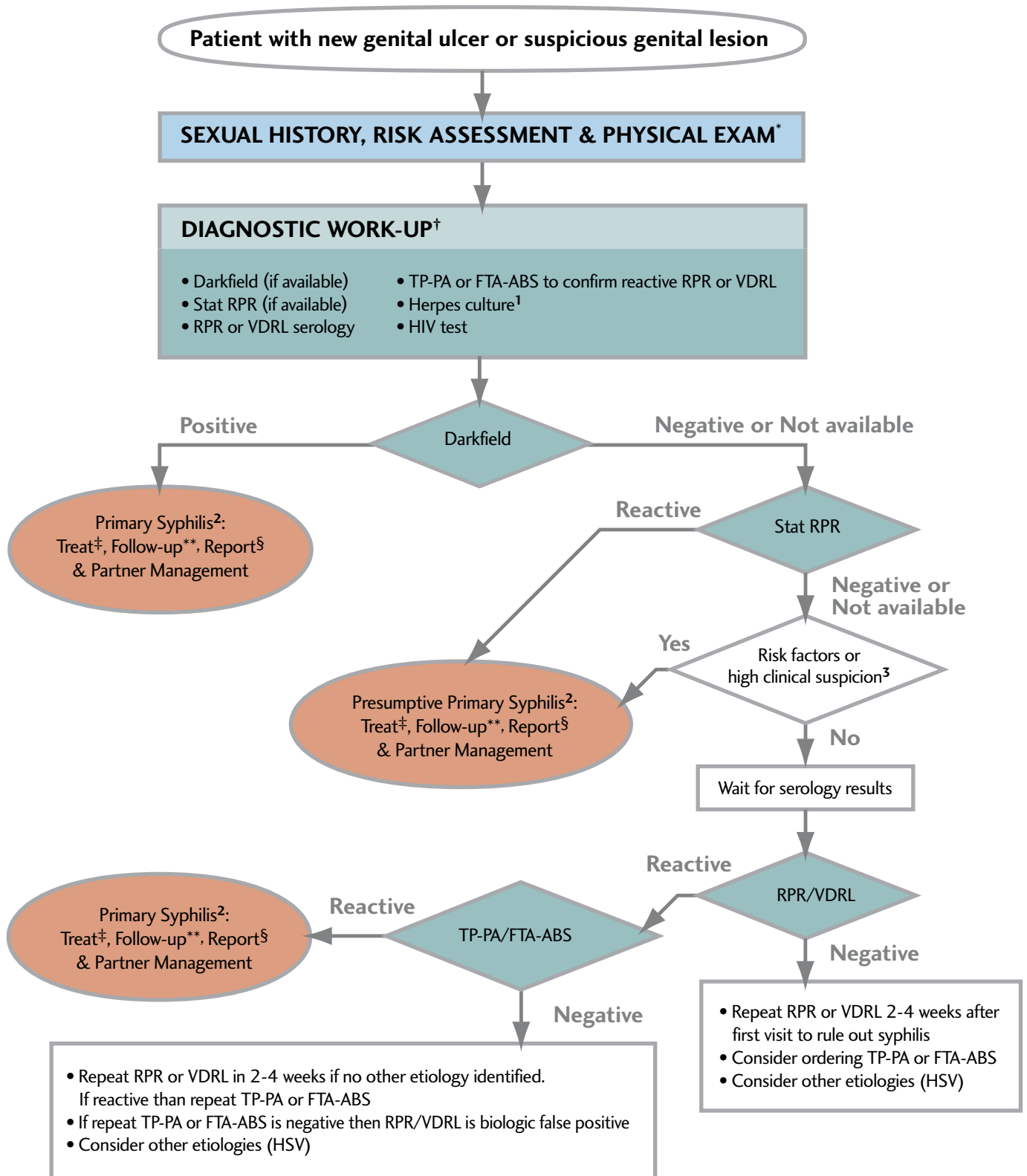
### \*\* Follow-Up To Assess Treatment Response

- 1-2 weeks & 1 month: clinical follow-up
- 3, 6, 9, 12, 24 months: serologic follow-up for HIVinfected
- 6, 12 months: serologic follow-up for HIV negative
- Treatment failure: failure of titer to decline fourfold within 6-12 months from titer at time of treatment.

## §REPORTING & PARTNER MANAGEMENT

- All syphilis cases or suspected cases must be reported to the local health department within one working day of diagnosis
- Local health departments will assist in partner notification & management
- Contact Number at Local Health Department

# Evaluating Patients For Primary Syphilis (P2/3)



\*, †, ‡, §, \*\* see color coded boxes

1. Also consider culture for *Haemophilus ducreyi* if exposure in endemic areas or if lesion does not respond to syphilis treatment.
2. All patients with suspected syphilis should be tested for HIV infection & screened for other STDs. Repeat HIV testing of patients with primary syphilis 3 months after the first HIV test, if the first test is negative.
3. If the patient is MSM (men who have sex with men) or has high risk sexual behavior (multiple partners, exchange of sex for money or drugs) or clinical exam with classic features of a syphilitic ulcer then presumptive treatment is recommended. Also consider presumptive treatment if patient follow-up is a concern.

# Evaluating Patients For Primary Syphilis (P3/3)

## Clinical Presentations Of Primary Syphilis

- Lesion appears 10-90 days after contact at site of exposure; may persist for 2-3weeks then resolves
- Usually genitorectal but may be extragenital, depends on exposure site
- Clinical presentation typical or atypical
  - Typical: single painless, indurated, clean-based ulcer with rolled edges & bilateral painless adenopathy
  - Atypical: can mimic herpes & other genital ulcers
  - ~25% present with multiple lesions

## Differential Diagnosis

Herpes, chancroid, primary HIV ulcers, trauma & many non-STD causes of genital ulcers



Syphilitic ulcer, glans



Syphilitic ulcer, glans



Crusted syphilitic ulcer, urethra



Multiple syphilitic ulcers, glans



Multiple syphilitic ulcers resembling herpes



Syphilitic ulcer, perianal



Syphilitic ulcer, vulva



Multiple syphilitic ulcers, vulva

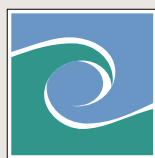
## Photo Credits

W With permission from Seattle STD/HIV Prevention Training Center at the University of Washington (photos from UW HSCER Slide Bank)

S With permission from San Francisco City Clinic C Centers for Disease Control and Prevention. D With permission from the Denver Metro Health Clinic

For additional copies,

see the online version of the Primary Syphilis Algorithm (3-07) on the resources page of the CA STD/HIV PTC website: [http:// www.stdhivtraining.org](http://www.stdhivtraining.org)



CALIFORNIA  
STD/HIV PREVENTION  
TRAINING CENTER

## Acknowledgements

The California STD/HIV Prevention Training Center thanks the Medical Directors from the National Network of Prevention Training Centers, The California STD Controllers Association and the Division of STD Prevention of the Centers for Disease Control and Prevention for their assistance in preparing this document.